

Using Edgewater Automation's FTP Server

As a service for our customers Edgewater Automation has an FTP server available on the Internet. FTP (File Transfer Protocol) is well suited for the transfer of large files (such as SolidWorks models) and is more secure than e-mail.

Each account on our server is separate and only you and Edgewater personnel have access to it. Let your Edgewater project manager know if you would like access to our FTP server. We will create an account for you and your project manager will supply you with a user name and password.

Any FTP client software may be used. Microsoft Windows Explorer has built-in the capability to connect to FTP servers. You may wish to show these instructions to your IT department to make sure that this activity is allowed on your company network. Some companies have policies in place that would prevent you from accessing FTP servers.

How to login using Windows Explorer:

Start Windows Explorer (Click Start → All Programs → Accessories → Windows Explorer). Type <ftp://ftp.edgewaterautomation.com> into the address bar (see figure 1). Press Enter.

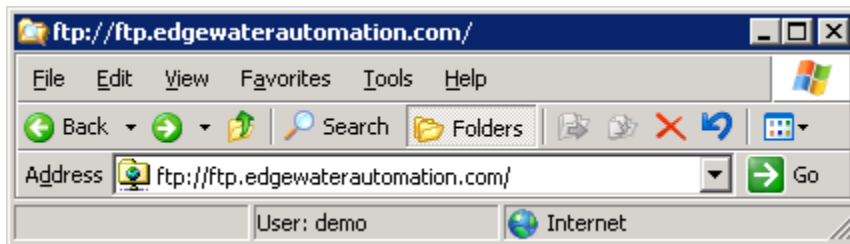


Figure 1

When prompted for a user name and password (figure 2), enter the information supplied to you by your Edgewater project manager and click Log On. Please note that the user name *and* password are case sensitive (you may find it easier to copy and paste your password).

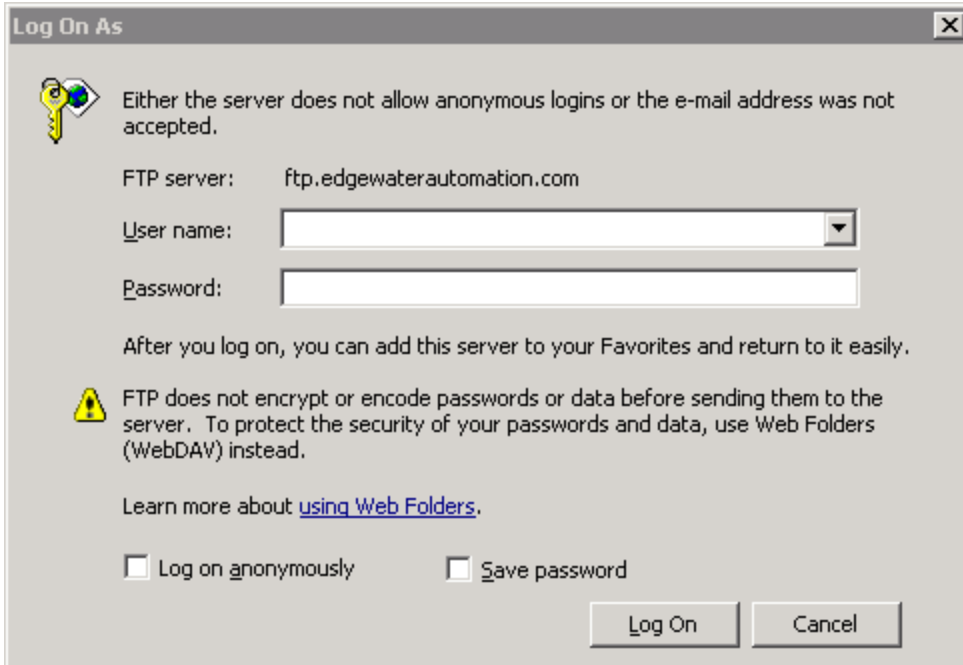


Figure 2

Once logged in (figure 3) you can access your files. You may cut and paste or drag and drop files to and from this window.

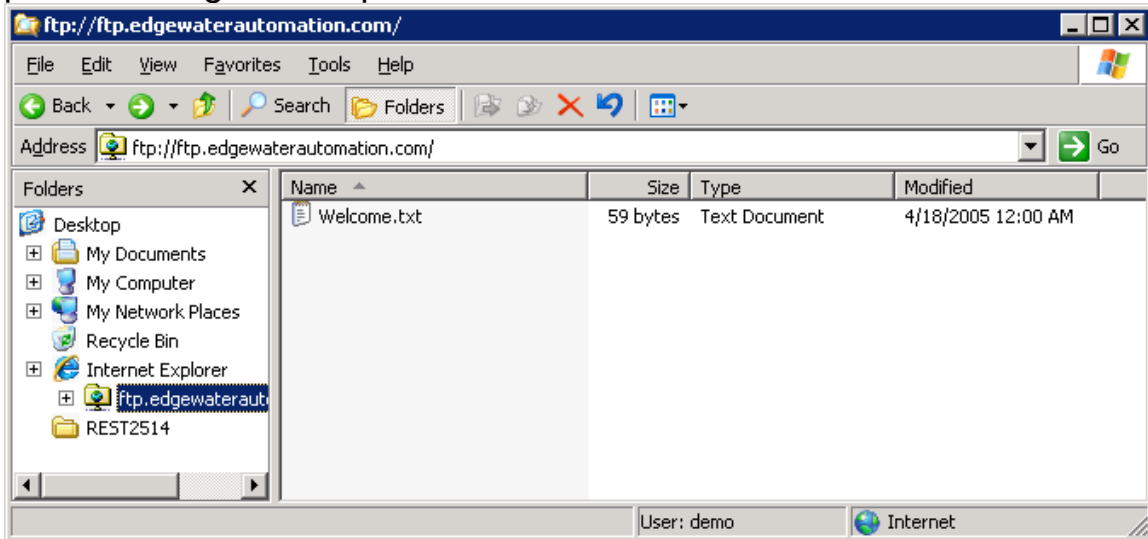


Figure 3

If you have any problems accessing our FTP site please don't hesitate to contact us at: 269-983-1300.